

CMU BLOCK WALL
3 HR FIRE RATING

MAIN ELECTRICAL FEED
& PANELS

JOB DATA	
BASIC WIND SPEED:	130
IMPORTANCE FACTOR:	1.00 (BUILDING CAT. II)
BUILDING OCCUPANCY CLASSIFICATION:	ASSEMBLY (GROUP A3)
BUILDING CONSTRUCTION TYPE:	TYPE 2B
EXPOSURE CATEGORY:	B
WINDBORNE DEBRIS REGION:	N/A
INTERNAL PRESSURE COEFFICIENTS:	+0.18, -0.18 (ENCLOSED)

PROPERTY DATA	
STRAP NUMBER:	802833023.0005833
FLOOD NUMBER:	06-4760009
FLOOD ZONE:	N/A

LEGEND	
	24" X 48" FLUORESCENT
	24" X 24" FLUORESCENT
	24" X 24" SUPPLY AIR GRILLE SEE SHT. M1
	24" X 24" RETURN AIR GRILLE SEE SHT. M1
	RECESSED CAN LIGHT SEE SHT. E1.
	EXHAUST FAN SEE SHT. M1.

DESIGNER: RICCI DESIGN and Build, Inc. 2397771445

DESIGNER: RICCI DESIGN and Build, Inc. 2397771445

AN INTERIOR REMODEL OF AN EXISTING UNIT FOR THE:
HARDCORE GYM
11500 TAMAMI TRAIL EAST, NAPLES, FLORIDA

ENGINEER OF RECORD: **J.C. Kosinski Engineering, Inc.**
135 GulfView Drive, Fort Myers Beach, FL 33931
PROFESSIONAL ENGINEER LICENSE NUMBER 92288

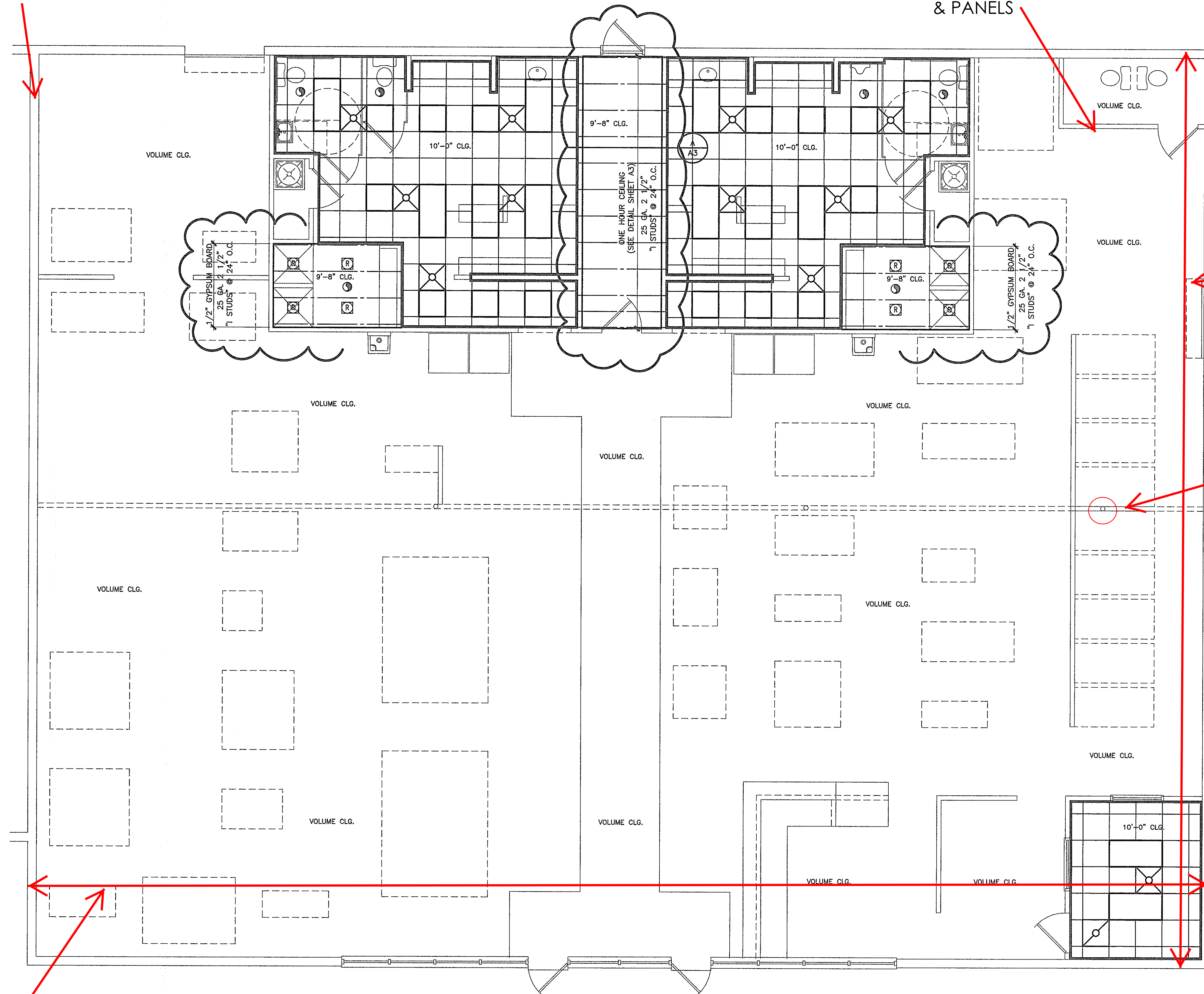
CHECKED	DATE
JCK	9-30-11

DRAWN	RR
SCALE	JOB
1/4" = 1'-0"	11-145

SHEET

R.C.

SEAL



REFLECTED CEILING PLAN

SCALE: 1/4" = 1'-0"